

# Bijay Niwas Palace, Bijaynagar - Fact Sheet



## Bijay Niwas Palace

Model Farm, Bijaynagar - 305624, (District Ajmer),  
Rajasthan, INDIA  
Tel: 91 1462 275411; +91 1462 215298  
E-mail: info@bijayniwaspalace.com or bijayniwaspalace@yahoo.com  
Website: www.bijayniwaspalace.com

### Direct Reservations contact:

Contact Name: Dushyant Singh  
Tel: + 91 941 400 4042

### Reservations and information please contact:

WelcomHeritage  
Sales & Marketing Office  
25, Community Shopping Centre, Basant Lok  
Vasant Vihar, New Delhi - 110057, INDIA  
Tel: +91 11 460 35500  
Fax: +91 11 460 35528  
E-mail: holidays@welcomheritagehotels.com  
Website: www.welcomheritagehotels.com

## About Bijay Niwas Palace

### *...a boutique palace in Royal Heartlands*

Bijay Niwas Palace is truly a serene royal retreat in the Royal heartlands of Rajasthan which is well known for great culture, warm hospitality, dauntless valour and a hypnotic charm. After meticulous renovations Rao Bijay Singh Masuda's summer retreat is now open. Utmost care has been taken to ensure that original features, antique furniture, authentic paintings are well preserved and the history still remains live for guests to enjoy. Bijay Niwas Palace sits proudly just 67 km south of Ajmer amidst 50 acres of private orchards which is part of a 200-acre farmland offering an intimate, serene and relaxing boutique hotel environment that reminds one of the richness and glory of times past.

**History** - Bijay Niwas was built almost 100 years ago by the erstwhile ruler Rao Bijay Singh the 16th descendant of the Masuda Royal Family, as a getaway retreat about the same time he founded the town of Bijaynagar, also named after him. The history of Masuda royal family dates back to Rao Jagmal early 16th century, Rao Narayan Singh, known for

his benevolence, literary knowledge and long innings as cabinet minister in the state government was the last to be right royally crowned 'king' before India's independence and is the father of Dushyant Singh the present scion and owner of Bijay Niwas Palace.

## Unique Bijay Niwas Palace

- **Over 100 year old summer retreat of Rao Bijay Singh – Royal family of Masuda**
- **Amidst 200 acres farmland with 50 acres of orchards**
- **Original aarish or stucco art work**
- **Original artworks and frescoed walls**
- **Tranquil, relaxed Royal family run heritage hotel**
- **Experience rural heartlands of Rajasthan**
- **Rural village safaris/tours village tour safaris / tours to nearby interesting villages**
- **Enjoy bullock-cart rides around the farmlands and neighbouring villages to feel an unexplored rural part of Rajasthan.**
- **Ideal stopover between Udaipur - Jaipur; Jodhpur – Jaipur or Jodhpur - Ranthambore**
- **Ajmer, Todgarh Raoli Sanctuary and Pushkar less than an hour's drive away**
- **Renovated to high standards**
- **A true boutique heritage hotel – A royal palace surrounded by peace and tranquillity**

## Location

Bijay Niwas Palace is situated in the heartlands of Rajasthan at Bijaynagar 67 km from Ajmer and 87 km from Pushkar.

## Transportation

### By Air

Nearest Airport Jaipur ( 185/190 km ) 3 hrs car journey, Jodhpur ( 190 km ) 3 hrs car journey & Udaipur Airport (Dabok) 210 km.

### By Train

To Ajmer train station, Shatabdi Express from Delhi followed 67 km car journey.

# Bijay Niwas Palace, Bijaynagar - Fact Sheet

## By Road

**Almost equi-distant between Jaipur ( 190 km ) and Udaipur ( 235 km ) via Chittorgarh, Jaipur- Jodhpur ( 190 km ) via Beawar, Ranthambore (Sawai Madhopur) being 235 km away via Deoli and Tonk.**

## Transfers

Bijay Niwas Palace is happy to arrange transfers (at extra cost) from Ajmer railway station.

## Arrival Information

### Check-In and Check-out

Check-in: 1200 Noon. Check-out: 1200 Noon. 12.00 pm. Extended check-out subject to negotiation/availability.

## Parking

Complimentary Parking is available for guests.

## Hotel Details

### Accommodation

15 Rooms and Suites in total.

All the rooms are done up in calm, earthy colours and in an almost minimalist style. The linen & furnishings are of the highest quality and the 'finish' is second to none- immensely stylish & comfortable. Rooms are located in the main Palace, in the garden bordering the exterior fort-style walls and exterior wall towers.

**The 5 Garden rooms are wheel-chair accessible.**

**The rooms or suites do not have Televisions or CD players.**

### Rao Sahib Suite

Rao Sahib Suite (as the rulers of Masuda had the title of 'Rao' meaning king) is almost 1500 sq. feet in size and features a large separate sitting room with an original floor 'Agra Jail' carpet (10'x12') which is over 100 years old, coloured antique Belgian glass panes, Chesterfield sofa set, art deco tables, 'aaraish' or stucco art work on floor and side wall panels, non-operational stucco fire place, an period writing table and frescoed walls.

The suite bedroom overlooks the dry river-bed and features two queen-sized antique beds, two sofa chairs with fresh soothing upholstery, antique tables, full view mirror and a large balcony at the back with sitting chairs and serene views of the expanse. The bedroom also has artwork on walls and coloured window panes. It is attached to a large dressing room and bathroom with exquisite 'Kohler' & Hansgrohe' single fittings and old fashioned bath tub with both hand and overhead shower.

There is another private balcony exclusively for the suite with access from the sitting room and dressing room; this has a small round dining table and beautiful pillars overlooking the eastern gardens.

- Garden view
- 2 Queen beds
- Separate sitting room & Bedroom
- Dressing room
- Balcony
- Bathroom with shower and bath-tub
- Located in Palace on first floor

- Connects to Heritage Standard room
- Accommodates maximum 2 adults + 2 children under 6 years

### Rani Saheba Suite

Rani Saheba Suite (as the queens of Masuda had the title of Rani meaning queen) is almost 1250 sq. feet in area, it has a sitting room with the most exquisite 'aaraish' (stucco) on the floor designed like a carpet and on wall panels comparable to the best that can be seen at 'City Palace - Jaipur', antique deco sofa set and brightly frescoed walls. The bedroom has twin beds with a period two-seater sofa, tables and windows with coloured glass panes. The Rani Saheba Suite and Rao Saheb Suite are connected through a common large balcony with the expansive view of the gardens and dry river bed. It has a large dressing room, a bathroom with similar fittings as the other suite but different coloured tiles. There is an enclosed private balcony facing the western garden and farmlands with sitting chairs.

- Garden view
- 2 Twin beds
- Separate sitting room & Bedroom
- Dressing room
- Balcony
- Bathroom with shower and bath-tub
- Located in Palace on first floor
- Connects to Heritage Standard room
- Accommodates maximum 2 adults + 2 children under 6 years

### 2 Heritage Rooms

The Heritage Standard rooms are about 14 x 9 feet in size with a large bathroom featuring upscale single lever fittings with a shower. The rooms are situated in the Palace on the first floor on either side of the terrace which leads to the suites. The rooms offer views of the gardens below, both have double beds, a baggage rack, a table-chair and a mini-bar.

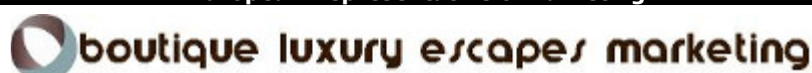
- Garden view
- Double bed
- Bathroom with shower
- Located in Palace on first floor
- Connects to Suites
- Accommodates maximum 2 adults

### 2 Heritage Deluxe Rooms

East and west facing Heritage Deluxe rooms offer views of the gardens from the dressing room. All rooms have their bathrooms facing the outer side with a parapet running all around so one could open their bathrooms and head straight for the swimming pool or gardens. Rooms have original frescoes and stucco artwork with a fire-place made of aaraish (though not in use), two twin beds with period furniture, large attached dressing rooms and bathrooms. Bathrooms have upscale fittings with showers and modern amenities. All rooms are located on the ground floor of the Palace.

- Garden views with access to swimming pool & gardens via outer parapet through the bathroom door
- 2 Twin beds
- Dressing room
- Bathroom with shower
- Located in Palace on ground floor
- Accommodates maximum 2 adults + 2 children under 6 years

European Representative & Marketing



Boutique Luxury Escapes Marketing, Vennwiske 59, 49811 Lingen (Ems), Germany.

Tel: +49 591 610 9647 Fax: +49 591 610 9673 E-mail: [office@blescapesmarketing.com](mailto:office@blescapesmarketing.com) Website [www.blescapesmarketing.com](http://www.blescapesmarketing.com)

# Bijay Niwas Palace, Bijaynagar - Fact Sheet

## 2 Heritage Superior Rooms

Situated on the south of the palace, the Heritage Superior rooms have garden views from the room and dressing rooms. All rooms have their bathrooms facing the outer side with a parapet running all around so one could open their bathrooms and head straight for the swimming pool or gardens. Rooms have original frescos and stucco artwork with a fire place made of aaraish (though not in use), two twin beds with period furniture, large attached dressing room and bathroom. Bathrooms have upscale fittings with showers and modern amenities. All rooms are located on the ground floor of the Palace.

- Garden views with access to swimming pool & gardens via outer parapet through the bathroom door
- 2 Twin beds
- Dressing room
- Veranda
- Bathroom with shower
- Located in Palace on ground floor
- Accommodates maximum 2 adults + 2 children under 6 years

## 5 Garden Rooms

All except room 108 are 10.5 x 13 feet in size. Room 108 is slightly larger 14 x 8 feet in size. Built along the Fort-style exterior walls surrounding the Palace, the Garden rooms face the palace and all but room 108 have private sit-out verandas (size 7x13 feet). All rooms feature two twin beds with side table and lamps, designer mosaic floors in different patterns, small chair-coffee table, and mini-bar cabinet with clothes hanger. Garden rooms offer beautiful views of the gardens and Bijay Niwas Palace. The rooms have stairs leading to their terraces to enjoy the vast expanses of the farmlands and orchard and many species of birds including peacocks.

- Garden views
- 2 Twin beds
- Private sit-out veranda
- Bathroom with shower
- Located on the inner side of the Fort-style exterior walls in the gardens facing the Palace
- Accommodates maximum 2 adults

## 2 Burj or Tower Rooms

Both Burj or Tower rooms are located in small a small tower on the Fort-style exterior walls surrounding the Palace. One room is situated on the north-east tower corner (105) the other on the south west tower corner (111). The outer wall is designed as a fortress hence the rooms are called Burj or Tower rooms. These are romantic and small about 10x10 feet or so in size and have private open sit-outs. With lots of character and lovely views of the palace, gardens and the private farmlands around the Burj rooms give a true feel of being on a rural Rajasthani farm. Both have attached bathrooms with similar fittings as the other rooms and showers. Room 105 has an antique metal double bed - ideal for honeymooners and Room 111 has two twin beds, both rooms have mini-bar cabinets. Room 105 has stairs leading to their terraces to enjoy the vast expanses of the farmlands and orchard and many species of birds including peacocks.

- Farmland and orchard views
- 2 Twin beds or Double bed
- Private sit-out veranda
- Bathroom with shower

- Located in the small Tower on the top-side of the Fort-style exterior walls, accessible by steps through the gardens
- Accommodates maximum 2 adults

All guest rooms at Bijay Niwas Palace offer the following amenities

### General Room Amenities

- Split air conditioners
- Mini bar/ fridge
- 8 inch top-end spring mattresses (serenity / impressions of ' Sleepwel ')
- High quality linen and pillows (Homescapes-Goose down)
- Telephone
- Tea/coffee maker
- Showers in all bathrooms except suites which have bath-tubs too.
- Hot/ cold water
- **2 Complimentary bottled water per room**
- Bathrobes & slippers
- Bath amenities
- Access to broadband Internet connection

### Amenities on Request

The following amenities may be available on request.

- Hair dryers
- Cribs

### Child Policy

Maximum 2 children under 6 years stay free when sharing with adults. One extra bed can be provided for children up to 12 years of age. Baby-sitting services is available upon request.

### Dinning

Relish the truly Indian or even continental cuisines in delicious flavours and delight in their tempting aromas, served with royal pride and courtesy.

There are many options for enjoying your meals just about anywhere you choose, they could be either in the comfort of the fabulously painted dining rooms with exquisite original stucco work or one could enjoy 'al-fresco' dining in the open with barbeque.

Breakfast in the gardens surrounded with some huge rare trees, chirping of birds and butterflies fluttering around can be a traveller's delight.

Room service is available 24 hours.

### Meal timings:

- Breakfast 07.00 a.m. to 10.30 a.m.
- Lunch 13.00 p.m. to 15.00 p.m.
- Dinner 19.00 p.m. to 22.00 p.m.

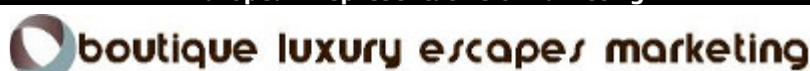
### Guest Services

- Laundry (chargeable)
- Internet Access & Email (free)
- Physician on call

### Recreation Facilities

- **Library** - An extensive variety of books are available for reading.

European Representative & Marketing



Boutique Luxury Escapes Marketing, Vennwiske 59, 49811 Lingen (Ems), Germany.

Tel: +49 591 610 9647 Fax: +49 591 610 9673 E-mail: [office@blescapesmarketing.com](mailto:office@blescapesmarketing.com) Website [www.blescapesmarketing.com](http://www.blescapesmarketing.com)

# Bijay Niwas Palace, Bijaynagar - Fact Sheet

- **Swimming Pool** – The infinity pool is situated in the gardens and is private. The temperature of the pool varies from 25 degrees Celsius to 30 degrees Celsius, depending on the weather. (December is the coldest month and March is the warmest). The pool is available for use between the hours of 6 am till 10 pm. There is no lifeguard on duty.
- **Guided village safari** to a nearby village to see the yet unexplored rural Rajasthan to Sutikhera & Badasan to visit houses made of mud, craftsmen at work, rural school & temple
- **Local artists** – folk dance & music arranged in palace grounds during Al fresco dining & Barbeque
- **Farming activity** - See ongoing farming activity or maybe give a hand and bring out the 'son-of-the-soil' in oneself.
- **Nature walks** - in the royal getaway where time moves with a languid saunter and the mind eases over with the feel of fresh wind
- **Nature walks** - in the royal getaway where time moves with a languid saunter and the mind eases over with the feel of fresh wind.

## Local attractions / possible excursions

### Todgarh-Raoli Wildlife Sanctuary (Dudhaleshwar) 85 km

This has recently been declared as a full-fledged wildlife sanctuary by the government, a reserve larger than Ranthambore in size with panther, sloth bear, wild boar and a variety of birds in good number. An extremely interesting way to spend a day with nature for the wildlife buff and an exciting drive in unexplored terrain.

### Pushkar 87 km Ajmer 67 km

A great ethnic tourist attraction famous for its world's biggest cattle fair and holy places. With interesting shopping too, in its quaint alleys.

### Chittorgarh Fort: 120 km

Rajasthan's famous citadel of valour and the biggest Rajput Fort. See the amazing tower of victory and the Rani Padmini's Mahal.

**Fort Masuda:** Short half-day excursion to Masuda Village, drive past the Ramgarh and the magnificent Masuda Fort (the former headquarter of the Masuda Royal Family), visit the family deity temples of Deomali (this village has been declared a heritage village by the government as all houses are made of mud in honour of the local god and deity of the royal family), Gopal Dwara the beautiful 400 year old main temple of the royal family and the 'chatri's of ancestors. With imposing views of the awesome fort.

**Sonkalia:** Great Indian Bustard Sanctuary. A half day excursion to visit the almost extinct Great Indian Bustard Reserve and try ones luck with a rare sighting.

## Other facilities

Bi-cycles are provided to guests available at no extra cost during their stay.

## Internet Access

Guests of Bijay Niwas Palace will enjoy internet connectivity in all guest rooms and hotel is Wi-Fi enabled.

## Length of stay

2 to 3 nights stay is recommended to enjoy a total rural relaxing experience as the heartlands of Rajasthan. There is plenty to offer to keep one interested and enjoy a relaxed holiday.

## Dress Code

There is no official dress code. It is very relaxed. Guests are asked not to walk around bare-chested or in swimwear, other than by the pool.

## Electricity

220 volts. The standard two / three pin adaptors work.

## Credit Cards / Currency

American Express, Visa and MasterCard are acceptable. Bijay Niwas Palace offers a money changing facility.

## Mobile Phones

Mobile phones work here.

## When to go/Climate

Rajasthan has some major climatic fluctuations. Lasting from April to October, summers experience an average temperature in the range of the 41.6° C (max) to 25° C (min). At times, the temperature may even rise to 45° C during May. During the winter months of December, January and February the days are warm and sunny but warm clothes are essential for the mornings and evenings as the average temperature varies between 23.6° C (max) to 7.9° C (min). June to September sees some rain. October and November are warm. Best time to visit is during the period of October to March. Bijay Niwas Palace remains open year round.

## Mosquitoes

Due to some rare herbal trees there are no mosquitoes in the palace compound all round the year. An amazing ecological feat

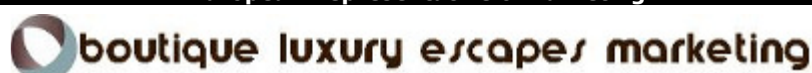
## Payment/Cancellation Policy

Full payment is required 30 days prior to arrival.

## Taxes

Rates are subject to Luxury Tax 10% (Oct. to Mar.) and 5% (Apr. to Sept.).14% Vat is applicable on F&B.

European Representative & Marketing



Boutique Luxury Escapes Marketing, Vennwiske 59, 49811 Lingen (Ems), Germany.

Tel: +49 591 610 9647 Fax: +49 591 610 9673 E-mail: [office@blescapesmarketing.com](mailto:office@blescapesmarketing.com) Website [www.blescapesmarketing.com](http://www.blescapesmarketing.com)